

TRANSVIEW DATA FUSION ENGINE

SUITE OF TOOLS

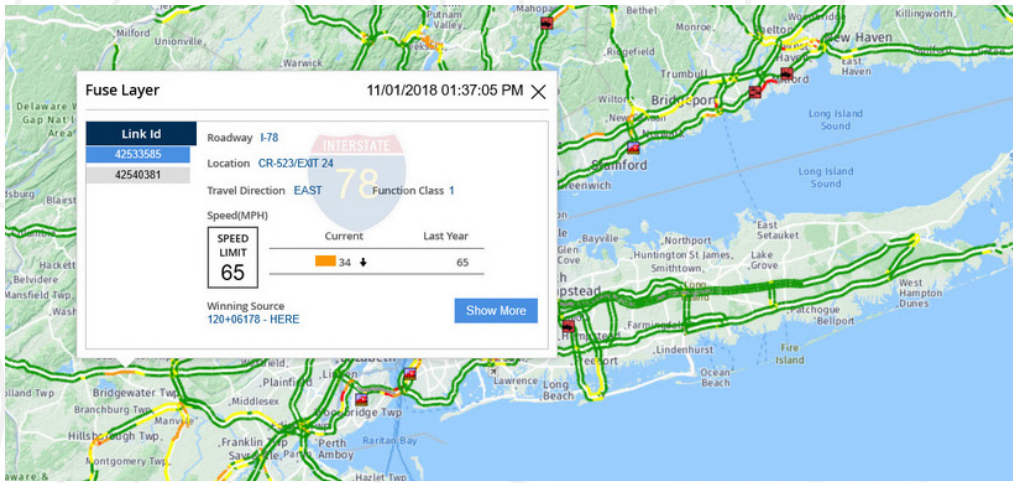
TRANSVIEW is a web-based data analysis system built around the Data Fusion Engine (DFE) that enables organization to analyse transportation system performance based on key indicators.

TRANSVIEW DFE system collects data from multiple sources and merges the information into a single feed. The tool allows organizations to view a single source that presents an accurate representation of speed, travel time, and event information (incidents, construction, and special events) on highways and transit facilities.

To accomplish this, The TRANSVIEW DFE system converts inputs to a geographically universal format, allowing for links, or segments of roadway, that may be different sizes in different user systems to match up into a universal TRANSVIEW format. Finally, TRANSVIEW pushes this data out to organizations and the public through several feed formats.

TRANSVIEW DFE system consists of a suite of 17 tools for operational analysis, mapping, historical analysis, and video display.



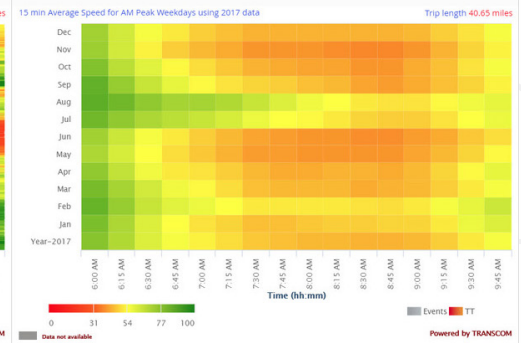


Operational Tools

- Operations Dashboard
- Corridor Viewer
- Project Viewer
- Zone Viewer
- Construction Conflict
- Travel Time Comparison
- Voice Assistant
- Operational Map
- Transit Operational Map
- AVL and Monitoring System
- Regional Conditions Viewer

Analytical Tools

- Event Playback
- Construction Conflict
- Travel Time Comparison
- Historical Travel Time Analysis
- Historical Event Search
- AVL and Monitoring System



Mapping Tools / Video Viewers

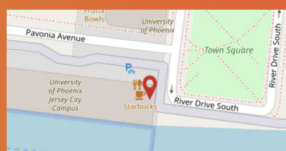
- Data Source Comparison
- Operational Map
- CCTV Viewer
- Video Wall Viewer

User Benefits

	Operational Tools	Mapping Tools	Analytical Tools	Video Viewers
Policy and Decision Makers	-	-	X	-
Agency Executives	X	X	X	-
Operations Staff	X	X	-	X
Operations Planning	X	X	X	-
Traveler Information	X	X	-	X
Planning Staff	-	-	X	-
Developers	X	X	X	-

About Infosenseglobal

Infosenseglobal has delivered advanced technology solutions and business initiatives backed by experienced, professional support to businesses across the globe since 2006. Our proven, leading practices and partnership-based project management approach combine to consistently deliver the very best client outcomes and exceptional levels of customer satisfaction. We focus on building partnerships and long-term relationships. Our teams are passionate and focus on innovation and quality. Because of this approach, we have retained 100% of our customers over the last 10 years.



Infosenseglobal Inc. & Kisnn Associates Inc.
 Newport Financial Center, 111 Town Square Place -- Suite 600 Jersey City, NJ - 07310
 (201) 839-2002 Ext 10 | projects@infosenseglobal.com | (201) 839-2003